



# 2025 FEE STRUCTURE

No Application Fee

## BANKING DETAILS

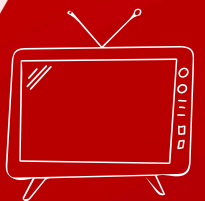
**Bank:** First National Bank

**Account Name:** Revolution Media Production

**Account Number:** 62402962337

**Branch:** Braamfontein

**Reference:** Your ID or Passport Number



[www.revolution.edu.za](http://www.revolution.edu.za)



[info@revolution.edu.za](mailto:info@revolution.edu.za)



011 4920 499



**OCCUPATIONAL HIGHER CERTIFICATES**  
A COURSE DISCOUNT IS GIVEN FOR A ONCE-OFF CASH PAYMENT.

*Instalment plans via EFT or Debit Order & Payments are made every month without a break.*

| Programme  | Cash Once Off | Deposit | 3 months | 6 Months | 9 Months |
|--|---------------|---------|----------|----------|----------|
| <b>Sound Operator</b>                                      | R45000        | R7500   | R13500   | R7200    | R5000    |
| <b>Journalist</b>  | R38000        | R7500   | R11200   | R6000    | R4250    |
| <b>Media/Programme Content Production Manager (Year 1)</b> | R45000        | R7500   | R13500   | R7200    | R5000    |
| <b>Media/Programme Content Production Manager (Year 2)</b> | R45000        | R7500   | R13500   | R7200    | R5000    |

**NATIONAL CERTIFICATES**

|   |        |       |        |       |       |
|---|--------|-------|--------|-------|-------|
| <b>Film and TV Production 1st Year (NQF L4)</b> | R38000 | R7500 | R11200 | R6000 | R4250 |
| <b>Film and TV Production 2nd Year (NQF L5)</b> | R45000 | R7500 | R13500 | R7200 | R5000 |
| <b>Radio Production</b>                         | R38000 | R7500 | R11200 | R6000 | R4250 |
| <b>Sound Technology 1st Year</b>                | R38000 | R7500 | R11200 | R6000 | R4250 |
| <b>Sound Technology 2nd Year</b>                | R38000 | R7500 | R11200 | R6000 | R4250 |
| <b>Photography</b>                              | R38000 | R7500 | R11200 | R6000 | R4250 |
| <b>Advertising</b>                              | R38000 | R7500 | R11200 | R6000 | R4250 |
| <b>Interactive Media</b>                        | R38000 | R7500 | R11200 | R6000 | R4250 |

**NATIONAL N DIPLOMA (N4 - N6)**

|   |        |       |        |       |            |
|---|--------|-------|--------|-------|------------|
| <b>Studio Work (Year 1 - N4 - N5)</b>       | R38000 | R7500 | R11200 | R6000 | R4250      |
| <b>Studio Work (Year 2 - N6)</b>            | R25000 | R7500 | R6500  | R3500 | <i>n/a</i> |
| <b>Music Composition (Year 1 - N4 - N5)</b> | R38000 | R7500 | R11200 | R6000 | R4250      |
| <b>Music Composition (Year 2 - N6)</b>      | R25000 | R7500 | R6500  | R3500 | <i>n/a</i> |
| <b>Music Performance (Year 1 - N4 - N5)</b> | R38000 | R7500 | R11200 | R6000 | R4250      |
| <b>Music Performance (Year 2 - N6)</b>      | R25000 | R7500 | R6500  | R3500 | <i>n/a</i> |

**ONLINE DISTANCE STUDY MODE FEES (FEW SELECTED COURSES AVAILABLE ONLINE)**

|  |        |       |       |       |       |
|--|--------|-------|-------|-------|-------|
| <b>Media/Programme Content Production Manager (Year 1)</b> | R26700 | R7500 | R6850 | R3600 | R2450 |
| <b>Media/Programme Content Production Manager (Year 2)</b> | R26700 | R7500 | R6850 | R3600 | R2450 |
| <b>Film and TV Production 1st Year (NQF L4)</b>            | R26700 | R7500 | R6850 | R3600 | R2450 |
| <b>Film and TV Production 2nd Year (NQF L5)</b>            | R26700 | R7500 | R6850 | R3600 | R2450 |
| <b>Radio Production</b>                                    | R26700 | R7500 | R6850 | R3600 | R2450 |
| <b>Sound Technology 2nd Year (NQF L5)</b>                  | R26700 | R7500 | R6850 | R3600 | R2450 |

**SHORT COURSE FEES**

|  | <b>Cash Once Off</b> | <b>Deposit</b> | <b>2 months</b> |  |  |
|--|----------------------|----------------|-----------------|--|--|
|--|----------------------|----------------|-----------------|--|--|

*Instalment plans via EFT or Debit Order & Payments are made every month without a break.*

|                                    |        |       |       |     |     |
|------------------------------------|--------|-------|-------|-----|-----|
| <b>Dee Jay Techniques (Adult)</b>  | R5000  | R3000 | R1000 | n/a | n/a |
| <b>Graphic Design</b>              | R6000  | R3000 | R1500 | n/a | n/a |
| <b>Guitar Lessons (Adult)</b>      | R5000  | R3000 | R1000 | n/a | n/a |
| <b>Keyboard Techniques (Adult)</b> | R5000  | R3000 | R1000 | n/a | n/a |
| <b>Live Sound Engineering</b>      | R8000  | R4000 | R2000 | n/a | n/a |
| <b>Music Production (Adult)</b>    | R10000 | R5000 | R2500 | n/a | n/a |
| <b>Radio Broadcasting</b>          | R8000  | R4000 | R2000 | n/a | n/a |
| <b>Studio Sound Engineering</b>    | R8000  | R4000 | R2000 | n/a | n/a |
| <b>Video Production</b>            | R10000 | R5000 | R2500 | n/a | n/a |
| <b>Web Design</b>                  | R4500  | n/a   | n/a   | n/a | n/a |

**KIDS NINJA PART TIME LESSONS**

|                            |         |     |     |     |     |
|----------------------------|---------|-----|-----|-----|-----|
| <b>Keyboard Techniques</b> | R500/hr | n/a | n/a | n/a | n/a |
| <b>Guitar Lessons</b>      | R500/hr | n/a | n/a | n/a | n/a |
| <b>Music Production</b>    | R500/hr | n/a | n/a | n/a | n/a |
| <b>Dee Jay Techniques</b>  | R500/hr | n/a | n/a | n/a | n/a |
| <b>Drums</b>               | R500/hr | n/a | n/a | n/a | n/a |
| <b>Violin</b>              | R500/hr | n/a | n/a | n/a | n/a |
| <b>Vocals</b>              | R500/hr | n/a | n/a | n/a | n/a |

## **TERMS & CONDITION**

The deposit is a non-refundable Registration Fee. The fee schedule is valid for study in the 2024 academic year only. It will be reviewed at the end of the 2024 academic year. Revolution Media Academy reserves the right to adjust its course costs annually to compensate for inflation without prior notice.

Revolution Media Academy reserves the right to withhold assessment marks and reports and restrict access to campus facilities for non-payment of course fees.

## **CANCELLATION**

A student intending to cancel his/her registration during a semester must inform Revolution Media Academy. A cancellation form must be completed and all relevant/supporting documentation must be attached. A cancellation is effected once Revolution Media Academy has confirmed this in writing.

## **RULES REGARDING CANCELLATION**

Should a student cancel on or prior to 14 calendar days from the date of initial deposit, the student will be liable for 50% of the fees based on the payment plan chosen. Should a student cancel after 14 calendar days from the date of initial deposit, the student will be liable for 80% of the fees based on the payment plan chosen. Students are requested to view the Revolution Media Academy Enrolment Contract Terms & Conditions (Section 2.2 & 2.2.1) for details on each programme and the rules and regulations of the institution.

## **COURSE WAITING LIST**

Due to the high demand for some of our courses, we are unable to reserve course seats for applicants with pending course registration- and other payments. In such a case the applicant might be placed on a course waiting list until the next course intake.

## **BANKING DETAILS**

**Bank:** First National Bank Account

**Name:** Revolution Media Production

**Account Number:** 62402962337

**Branch:** Braamfontein

**Reference:** Your ID or Passport Number